

Design Features & Performance

Snap-Lock limit switches have separate enclosures within a single housing for the electrical contacts and terminals on one side and latch bars, rockers and other parts of the operating mechanism on the other side.

The snap-lock action ensures a quick-make and quick-break of contacts together with locking in either open or closed position.

These switches are heavy duty, machine tool type with isolated poles, double throw, butt type contacts. Enclosures are water, oil and dust tight and meet NEMA Type 1, 4, and 13 requirements.

Provide Separate Enclosures for Mechanical and Electrical Sides

Electrical Side



Mechanical Side



The electrical side, completely separated from the mechanical side, provides ample wiring space and readily accessible terminal screws in the molded contact blocks. The contact lever carries self-wiping silver-alloy contacts and is connected directly by a shaft to the latch bar on the mechanical side. Water and oil tight enclosures are assured by the use of proper gasket materials.

The contacts are positively maintained until the latch bar is disengaged by the return travel of the lever to reset the switch. The return spring serves to reset the switch automatically to its original position when the force on the operating lever is removed, but with spring removed the operating lever will remain in either position as actuated.



**Series EA080
Standard**



**Series EA060
Short Travel**



**Series EA040
Neutral Position**

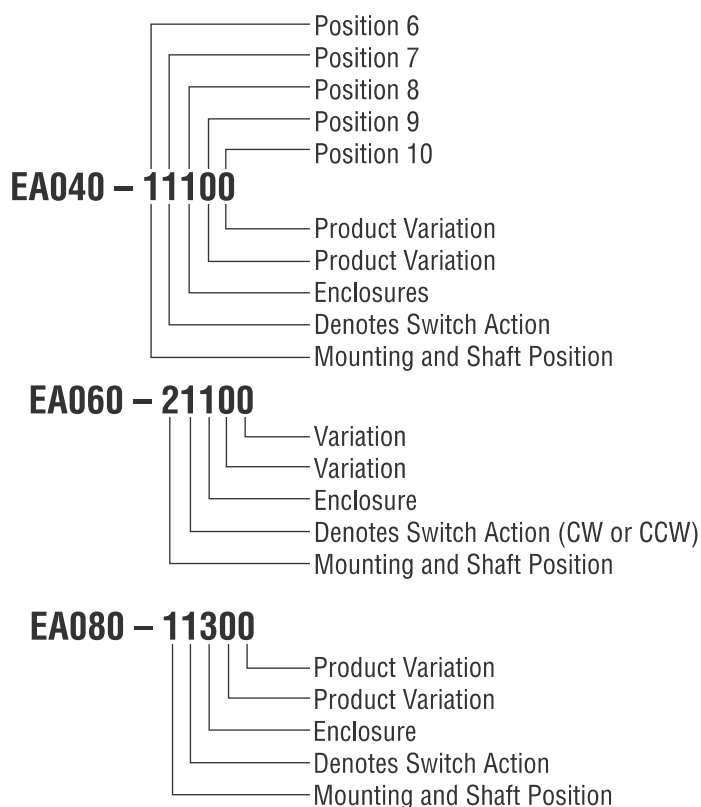
Catalog Numbering System

How to Read Part Numbers

Always order Switch and Operating Lever as SEPARATE ITEMS and use the Ordering Number listed. Refer to Series EL for Operating Levers.

EXAMPLE: To order a Standard Snap-Lock Switch and the operating lever considered as standard, use the catalog numbers as follows:

- 1 No. EA080-11100 Snap-Lock Switch
- 1 No. EL010-53420 Operating Lever Assembly



Position 6

- | | |
|--------------------------|----------------------------------|
| 1 Standard Front Shaft | 7 Standard Front and Back Shafts |
| 2 Wide Front Shaft | 8 Wide Front and Back Shafts |
| 4 Standard Reverse Shaft | 0 Special |
| 5 Wide Reverse Shaft | |

Position 7

- | | |
|-------|------------------|
| 1 CW | 3 Without Spring |
| 2 CCW | 9 Special |

Position 8

- | | |
|----------------------------------|-----------------------------------|
| 1 Standard Enclosure | 5 Standard Housing, Plastic Cover |
| 2 Epoxy Sealed Switch with Cable | 6 Sealed Switch with Connector |
| 3 Extreme Environment | 9 Special |
| 4 Tandem | |

Position 9 & 10

Denotes Product Variation

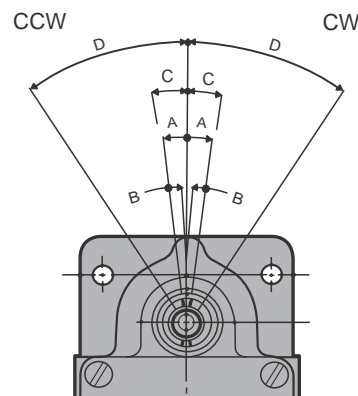
Note: The above chart is designed to help identify an existing model number. It is not intended to be used to select a model number.



Designed for applications where a neutral position is essential in operation. This series provides the same snap locking action of the other series of SNAP-LOCK Switches.

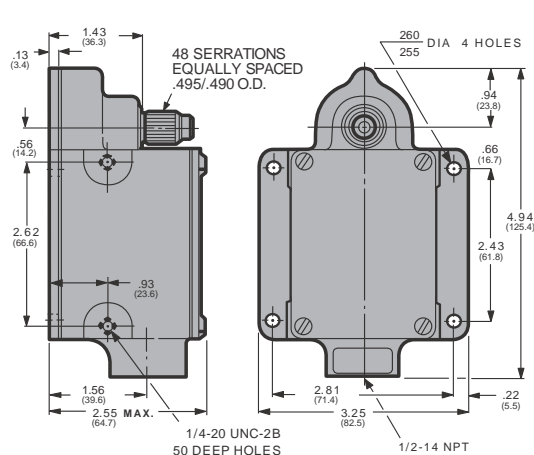
Can be furnished with standard and style 1 mountings.

Operational Data

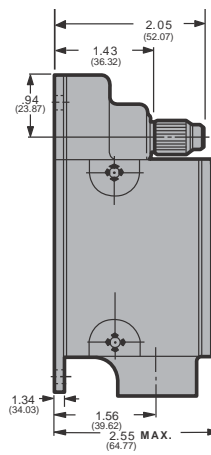


- A. Pre-Travel 7°
- B. Differential Travel 6°
- C. Recommended Travel 7°30'
- D. Total Travel 33°
- E. Max. Torque During Pre-Travel 22 Lb-In
- F. Max. Torque at Total Travel Lb-In
- G. Weight: Approx. 2.3 Lbs.

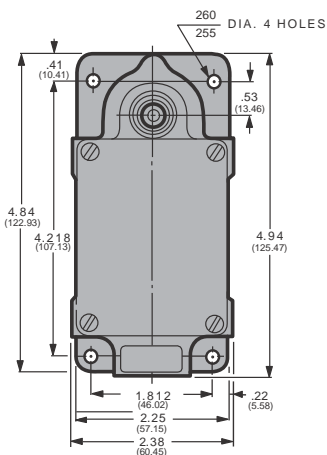
Dimensions and Mounting



Wide Mounting Plate



Long Mounting Plate



| ORDERING INFO | ORDERING NUMBERS |
|---------------|------------------|
| TYPE MOUNTING | SWITCH NUMBERS |
| LONG MOUNTING | EA040-11100 |
| WIDE MOUNTING | EA040-21100 |

Contact Configurations



Specifications

Heavy Duty, Machine Tool Type, Quick Make, Quick Break, Butt Type, Contacts (2 Normally Open)

Enclosure is Water, Oil and Dust Tight. Meets (NEMA) 1, 4, & 13 Requirements.

Torque Necessary for Operation of Switch
22 in. lb.

Ambient Temperature: -20°C to + 90°C

For Hazardous Location Requirements, see EA880 Series.

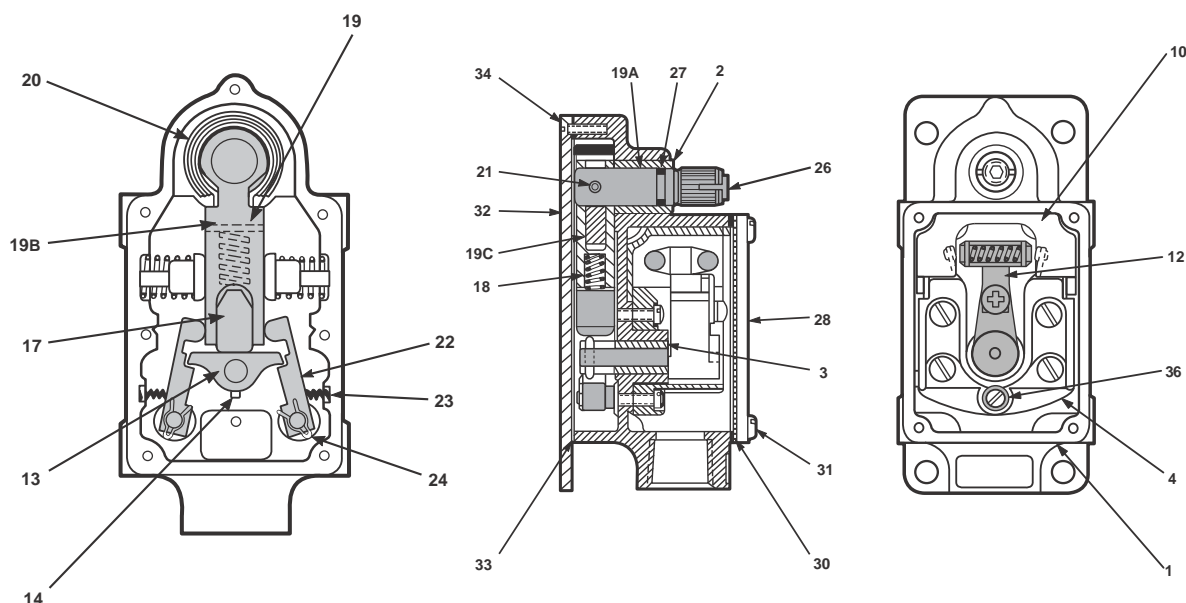
Continuous Current Rating - Amperes

| Volts | AC | DC |
|-------|----|-----|
| 125 | 20 | 5 |
| 250 | 15 | 1.5 |
| 480 | 10 | |
| 600 | 5 | |

75-100% Power Factor

External Lever is Adjustable by 7°30'
Increments thru 167°

Parts List



| ITEM NO. | DESCRIPTION | QTY. | ITEM NO. | DESCRIPTION | QTY. |
|----------|--|------|----------|----------------------|------|
| 1 | HOUSING ASSY. | 1 | 21 | ROLL PIN | 1 |
| 2 | BUSHING | 1 | 22 | LATCH | 2 |
| 3 | BUSHING | 1 | 23 | LATCH SPRING | 2 |
| 4 | CONTACT BLOCK | 1 | 24 | LATCH RETAINING RING | 2 |
| 10 | END INSULATOR | 1 | 26 | PIPE PLUG | 1 |
| 11 | CONTACT LEVER ASSY. | 1 | 27 | "O"-RING | 1 |
| 13 | ROCKER | 1 | 28 | TOP COVER | 1 |
| 14 | ROLL PIN | 1 | | | |
| 17 | ROLL SLIDE | 1 | | | |
| 18 | ROLLER SLIDE SPRING | 1 | 30 | TOP COVER GASKET | 1 |
| 19 | LEVER SHAFT ASSY. (INCLUDES ITEMS 19A, 19B, 19C, 20 & 21) | 1 | 31 | TOP COVER SCREW | 4 |
| 19A | LEVER SHAFT | 1 | 32 | BOTTOM COVER | 1 |
| 19B | LEVER | 1 | | | |
| 19C | SPRING LEVER | 1 | 33 | BOTTOM COVER GASKET | 1 |
| 20 | TORSION SPRING | 1 | 34 | BOTTOM COVER SCREW | 7 |
| | | | 36 | SCREW | 2 |